



YOUR VOICE, IN ACTION!



MAURICE GIBB PARK



# Maurice Gibb Park

## YOUR VOICE, IN ACTION!

### MAURICE GIBB PARK PROJECT - \$3.3 MILLION

The project includes the soil remediation to rid the site of contaminated soil, and the resulting renovation of the park, to include the following basic park elements: a new playground with shade canopy, pavilion(s), a dog park, walkways, minor restroom renovations, landscaping with open sodded areas, irrigation, signage and park furnishings. Required additional funding is \$1.6 Million.

Resilient strategies proposed at the park include storm water retention and re-use system, pervious pavement for walkways in lieu of the asphalt paving which currently exists, the use of solar panels for pedestrian lighting. Installation of solar panels on the shade canopy at the playground, to provide power for the irrigation pumps or any concession areas. Estimated cost for the implementation of these strategies \$1.7 Million.



PARKS, RECREATIONAL, AND CULTURAL FACILITIES

GENERAL OBLIGATION BOND

**PROJECT: MAURICE GIBB PARK**

**COST: \$3.3 MILLION**

**Department: Capital Improvement Projects**

The project includes the soil remediation to rid the site of contaminated soil, and the resulting renovation of the park, to include the following basic park elements: a new playground with shade canopy, pavilion(s), a dog park, walkways, minor restroom renovations, landscaping with open sodded areas, irrigation, signage and park furnishings. Required additional funding is \$1.6 Million.

Resilient strategies proposed at the park include stormwater retention and re-use system, pervious pavement for walkways in lieu of the asphalt paving which currently exists, the use of solar panels for pedestrian lighting. Installation of Solar Panels on the shade canopy at the playground, to provide power for the irrigation pumps or any concession areas. Estimated cost for the implementation of these strategies \$1.7 Million.



[www.GOMB2018.com](http://www.GOMB2018.com)

PUBLIC INFORMATION PROGRAM | CITY OF MIAMI BEACH

15





# Maurice Gibb Park

# YOUR VOICE, IN ACTION!

## RESILIENT SEAWALLS AND LIVING SHORELINES – \$10 MILLION (Partial Funding for the Project)

Seawalls are built to protect areas of human habitation along the coast against erosion, tides, and waves. There are more than 60 miles of seawalls surrounding Miami Beach, five miles or 25,000 linear feet of which are publicly owned. Many of these seawalls are in structural disrepair or are too low and overtopped during high tides. They are therefore in need of rehabilitation.

In 2015, the city changed its minimum height standard from 3.2' NAVD to 5.7' NAVD (North American Vertical Datum 1988) to account for rising sea levels. This project provides funding for rehabilitating failing or low seawalls to meet the city's new minimum height standard. It also provides funding for living shoreline techniques, as well as hybrid stabilization shoreline systems in areas where site specific conditions allow existing environmental features to be preserved and enhanced. Living shorelines are a green infrastructure technique with co-benefits beyond shoreline stabilization such as wave reduction, improved water quality, habitat creation and other ecosystem benefits.

The cost to rehabilitate a seawall varies depending on whether it is proposed as a traditional seawall or living shoreline. This money will be further leveraged through the Florida Inland Navigation District (FIND) grants and federal and state funding.



### NEIGHBORHOODS AND INFRASTRUCTURE GENERAL OBLIGATION BOND

#### PROJECT: RESILIENT SEAWALLS AND LIVING SHORELINES COST: \$10 MILLION

Department: Environment & Sustainability/Public Works

Seawalls are built to protect areas of human habitation along the coast against erosion, tides and waves. There are more than 60 miles of seawalls surrounding Miami Beach, five miles or 25,000 linear feet of which are publicly owned. Many of these seawalls are in structural disrepair or are too low and overtopped during high tides. They are therefore in need of rehabilitation.

In 2015, the city changed its minimum height standard from 3.2' NAVD to 5.7' NAVD (North American Vertical Datum 1988) to account for rising sea levels. This project provides funding for rehabilitating failing or low seawalls to meet the city's new minimum height standard. It also provides funding for living shoreline techniques, as well as hybrid stabilization shoreline systems in areas where site specific conditions allow existing environmental features to be preserved and enhanced. Living shorelines are a green infrastructure technique with co-benefits beyond shoreline stabilization such as wave reduction, improved water quality, habitat creation, and other ecosystem benefits.

The cost to rehabilitate a seawall varies depending on whether it is proposed as a traditional seawall or living shoreline. A cost breakdown per linear foot, which includes design and permit fees, mitigation and construction costs, is provided below for both types. The total cost of rehabbing the most vulnerable remaining segments of seawall is \$10 million. This money will be further leveraged through the Florida Inland Navigation District (FIND) grants and federal and state funding. The project is being recommended for inclusion in the G.O. Bond because there is currently no dedicated source of funding for seawall rehabilitation or living shoreline creation.

Cost per Seawall Type		
Traditional Seawall	\$2,000 per lf	Estimated from Maurice Gibb Park seawall project which cost \$400,000.
Living Shoreline	\$3,000 per lf	Estimated from Brittany Bay hybrid seawall project, which has an estimated cost of \$2.5 million.

[www.GOMB2018.com](http://www.GOMB2018.com)

PUBLIC INFORMATION PROGRAM | CITY OF MIAMI BEACH

44



# Maurice Gibb Park

YOUR VOICE, IN ACTION!

## EXISTING PARK





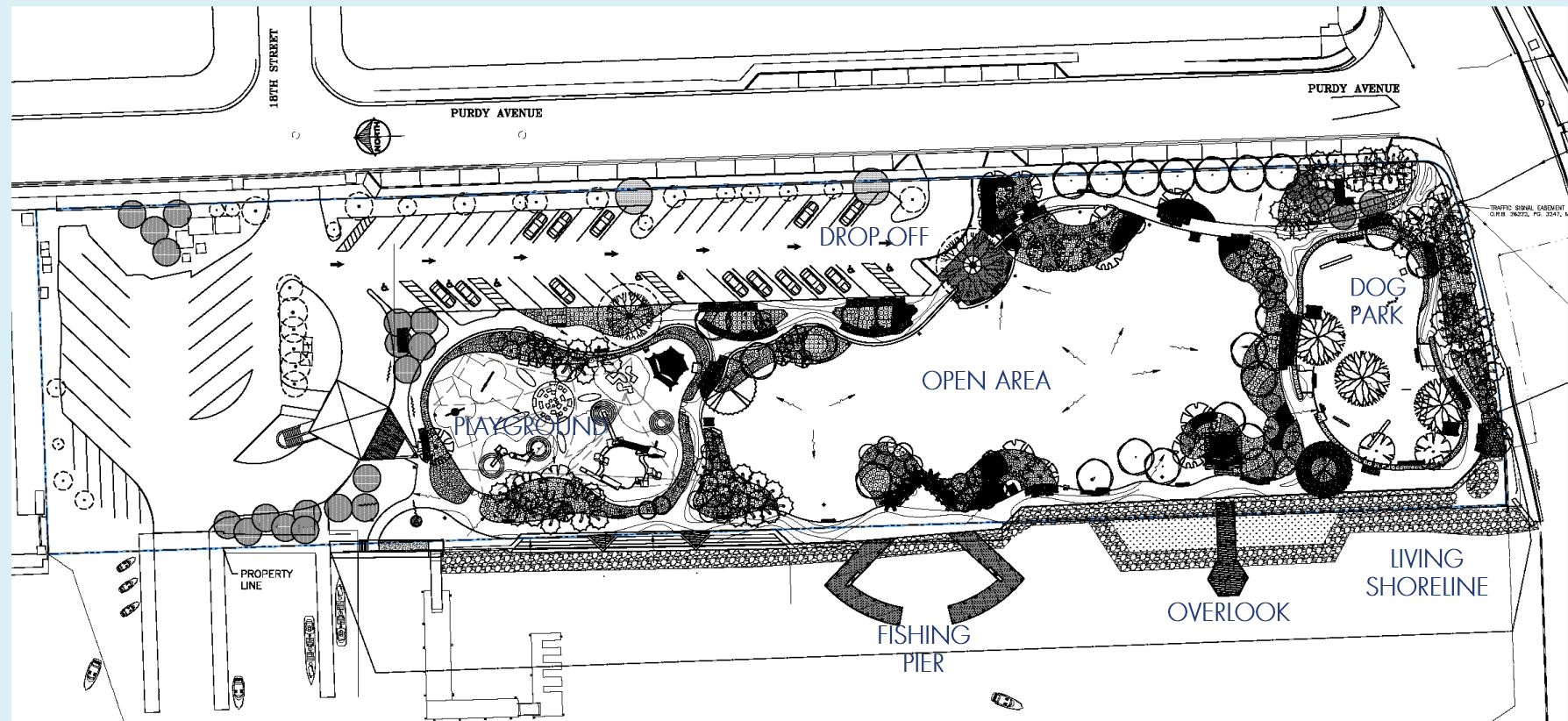


# Maurice Gibb Park

YOUR VOICE, IN ACTION!

## SCOPE OF WORK

- Soil Remediation
- New Playground with Shade Canopy
- Pavilions
- Dog Park
- Overlook
- Fishing Pier
- Walkways
- Landscaping with Open Sodded Areas
- Irrigation
- Signage and Park Furnishings
- New Seawall to 5.7' NAVD
- Living Shoreline with the Extension of Mangrove Area

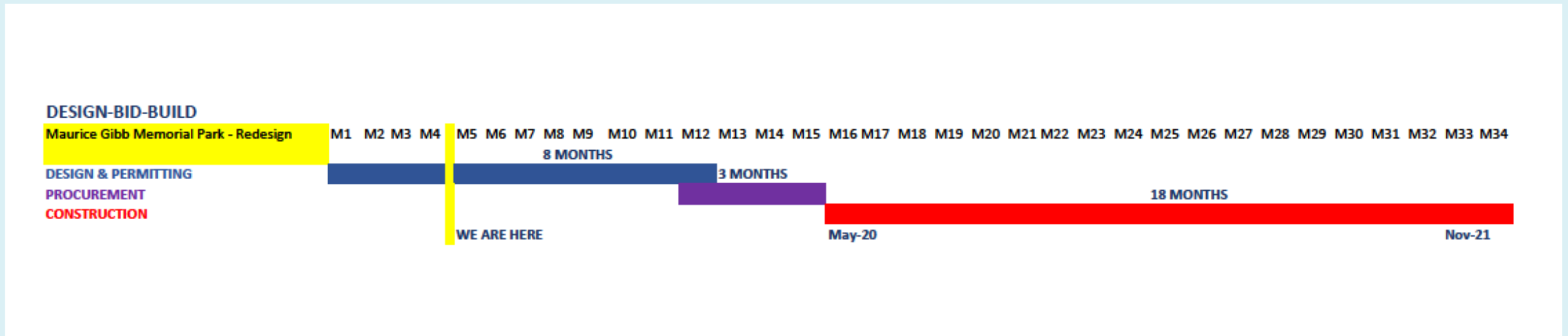




Maurice Gibb Park

YOUR VOICE, IN ACTION!

# Project Schedule







# Maurice Gibb Park

YOUR VOICE, IN ACTION!



OVERLOOK





# Maurice Gibb Park

YOUR VOICE, IN ACTION!



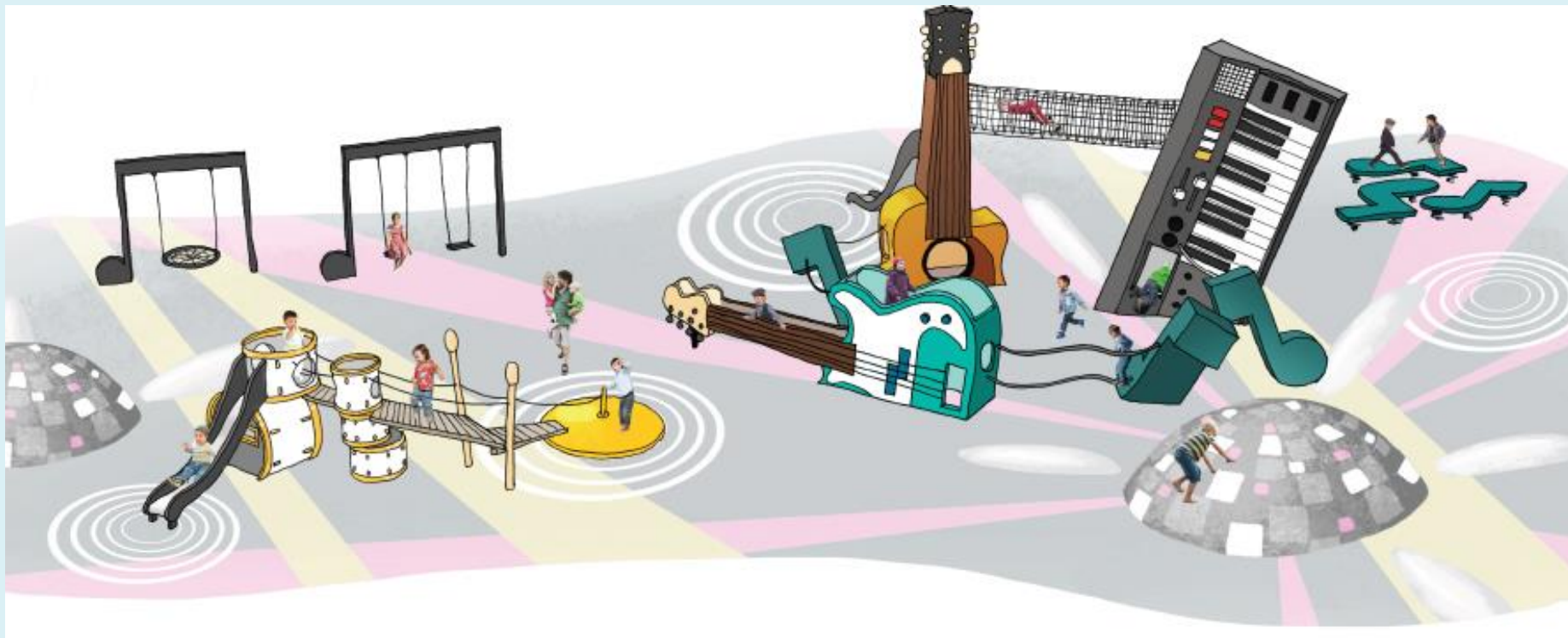
FISHING PIER AND MAURICE GIBB MEMORIAL





# Maurice Gibb Park

YOUR VOICE, IN ACTION!



NEW PLAYGROUND EQUIPMENT



Maurice Gibb Park

YOUR VOICE, IN ACTION!

Thank You